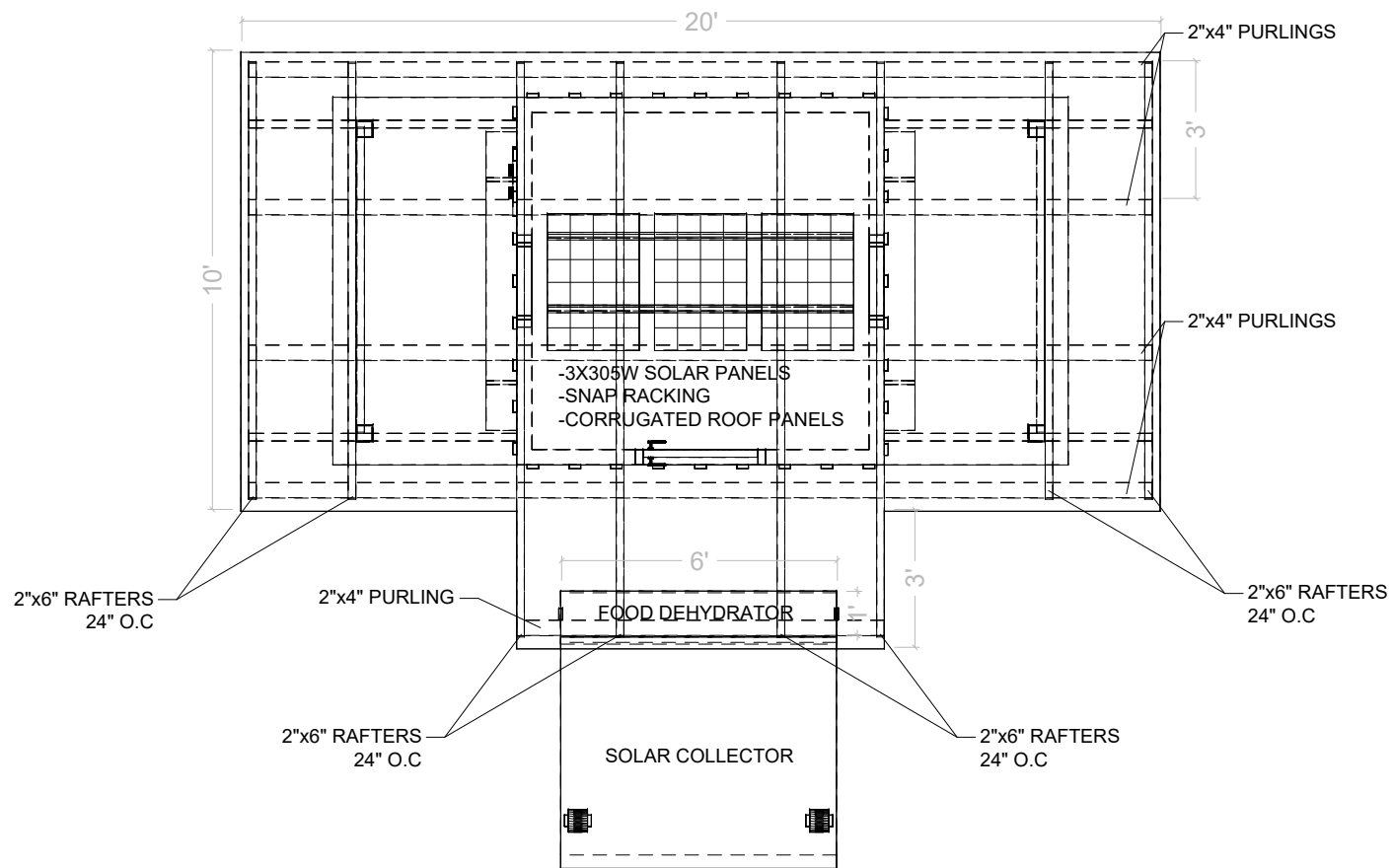


FLOOR PLAN  
SCALE: 3/4"=1'-0"

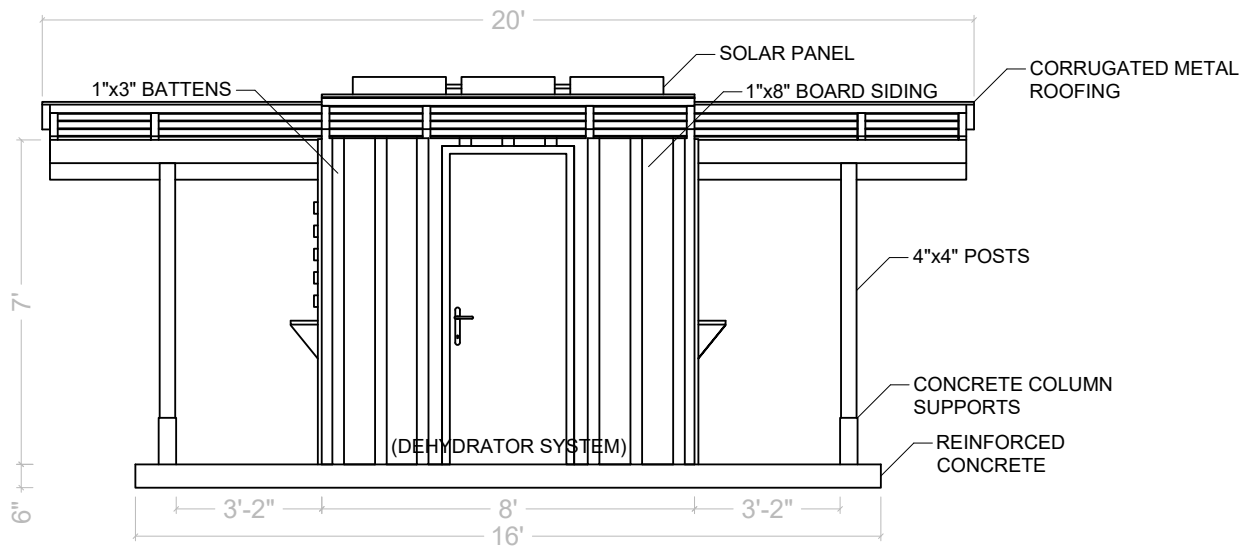


PACIFIC ISLANDS SOLAR STATION V.1.

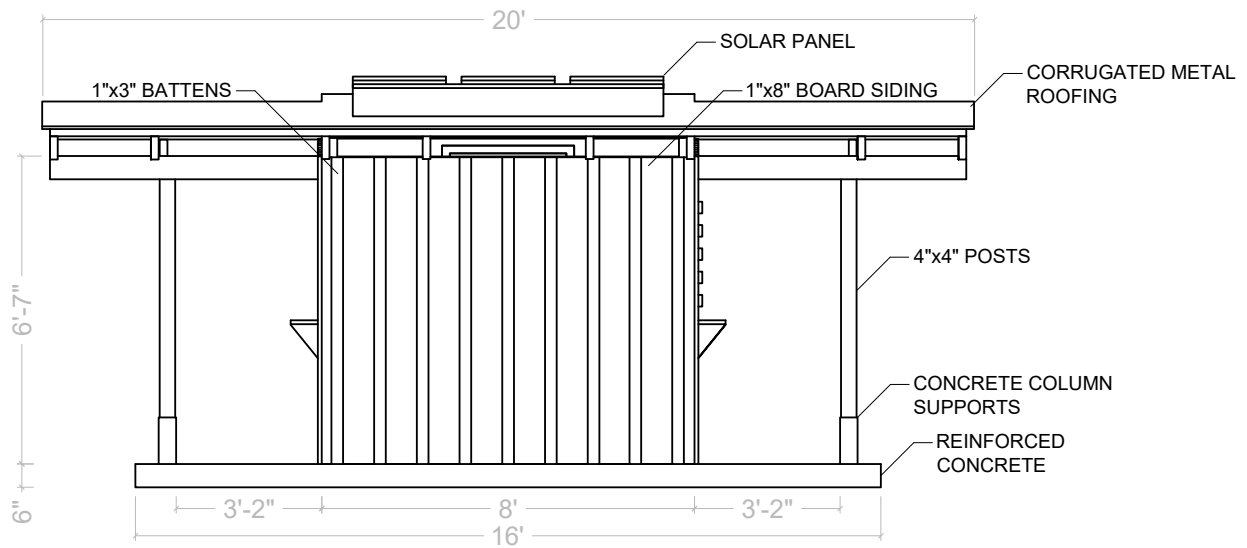
LOCATION:  
LATITUDE: 9° SOUTH  
LONGITUDE: 160° EAST  
ON JULY 09, 2020

MAGNETIC DECLINATION:  
8°39,72 EAST

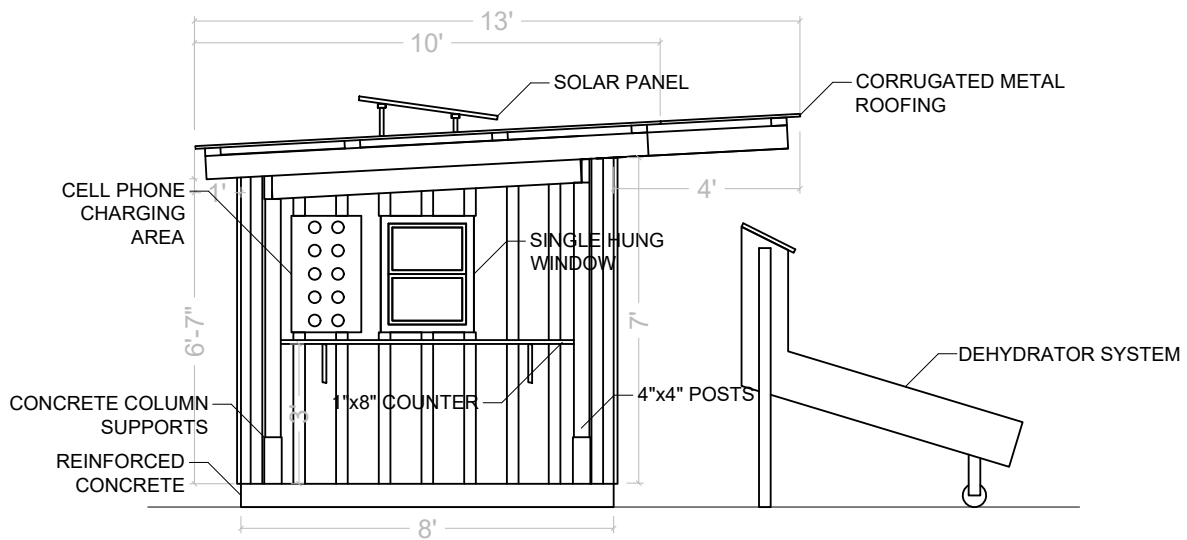
ROOF FRAMING WITH SOLAR SYSTEMS  
SCALE: 1/4"=6"



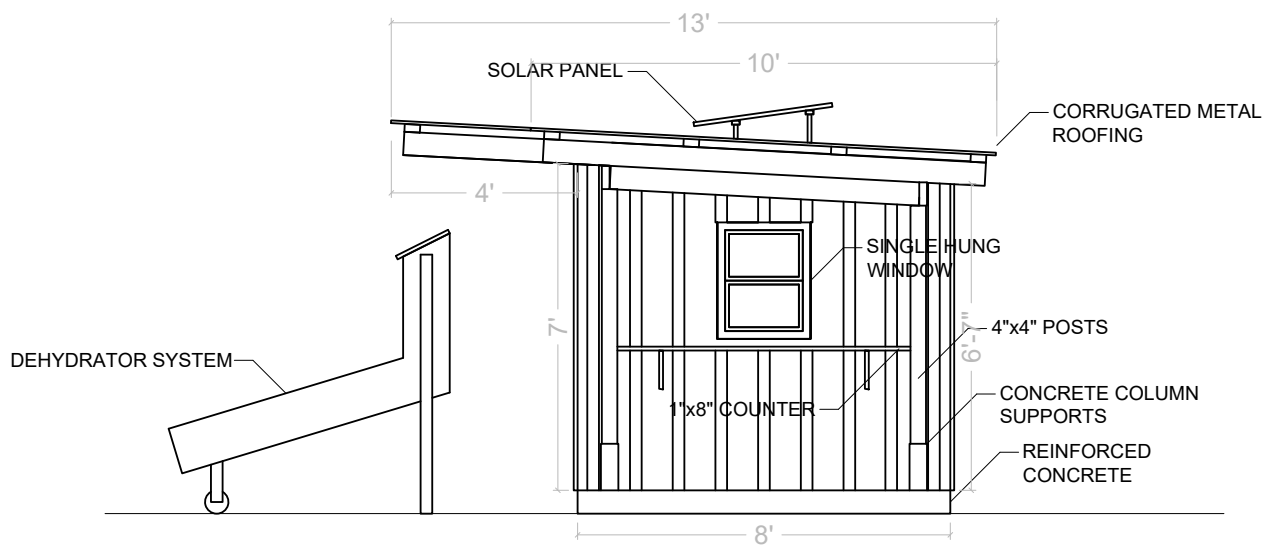
NORTH ELEVATION  
SCALE: 1/4"=6"



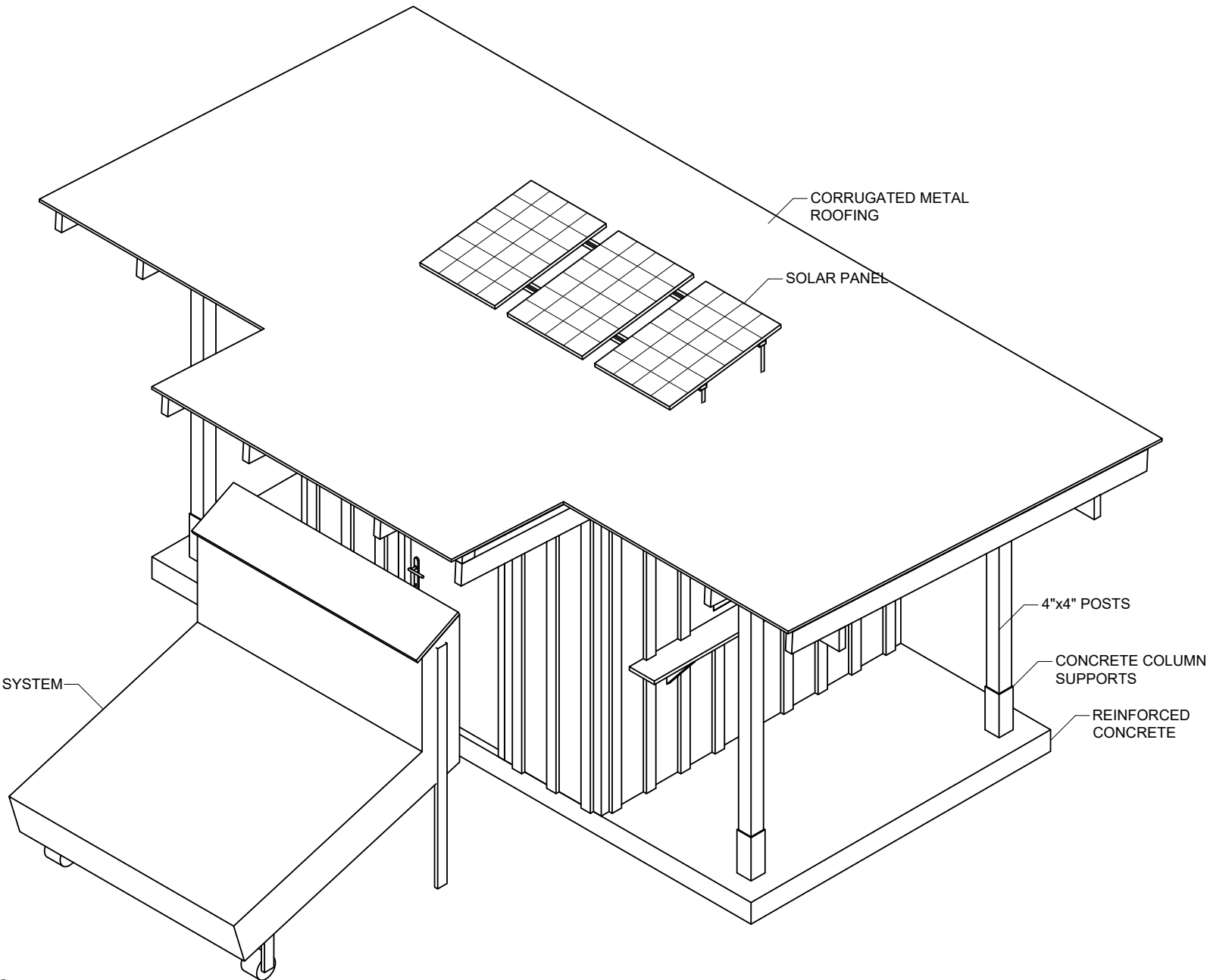
SOUTH ELEVATION  
SCALE: 1/4"=6"



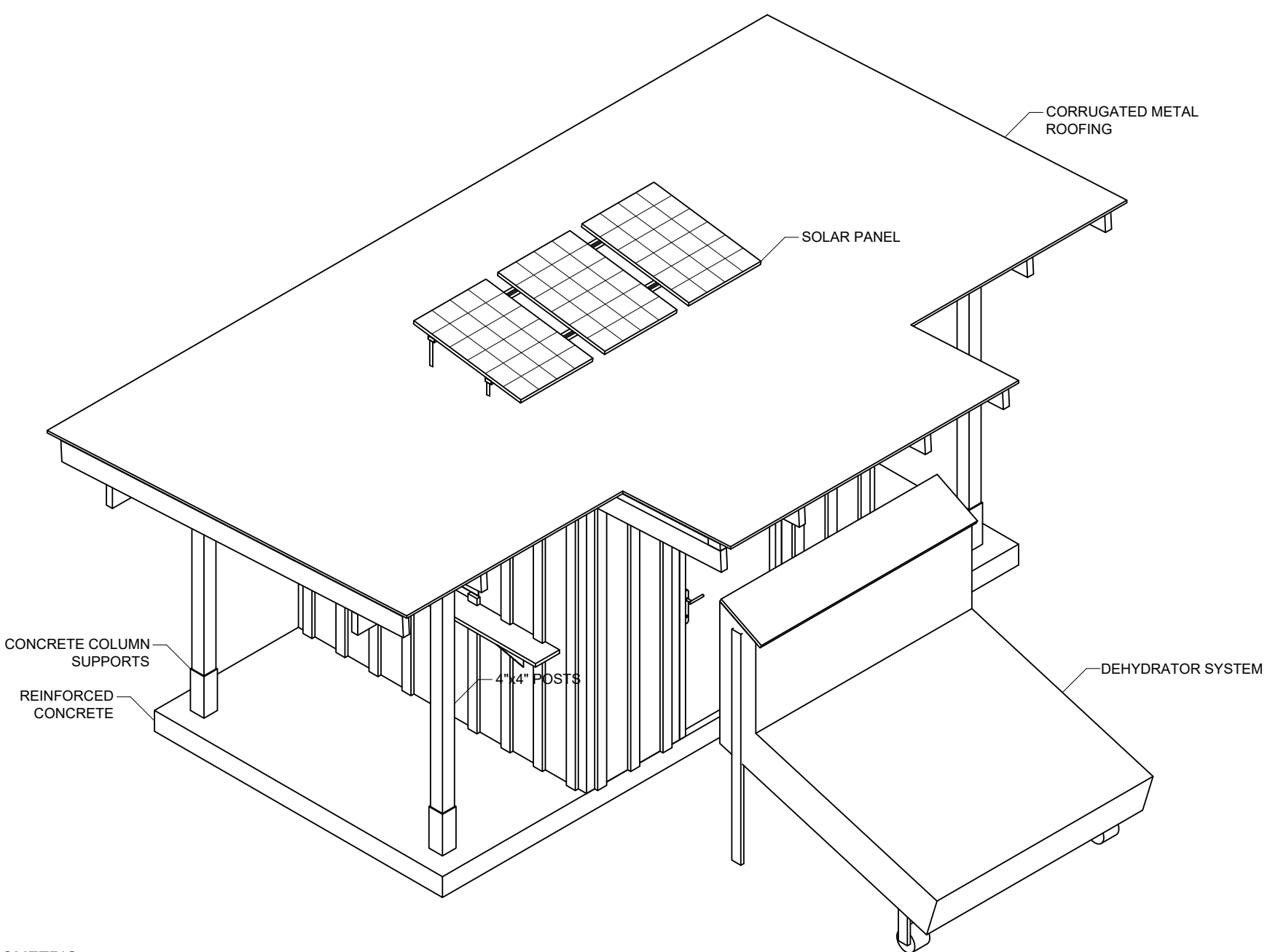
EAST ELEVATION  
SCALE: 1/4"=6"



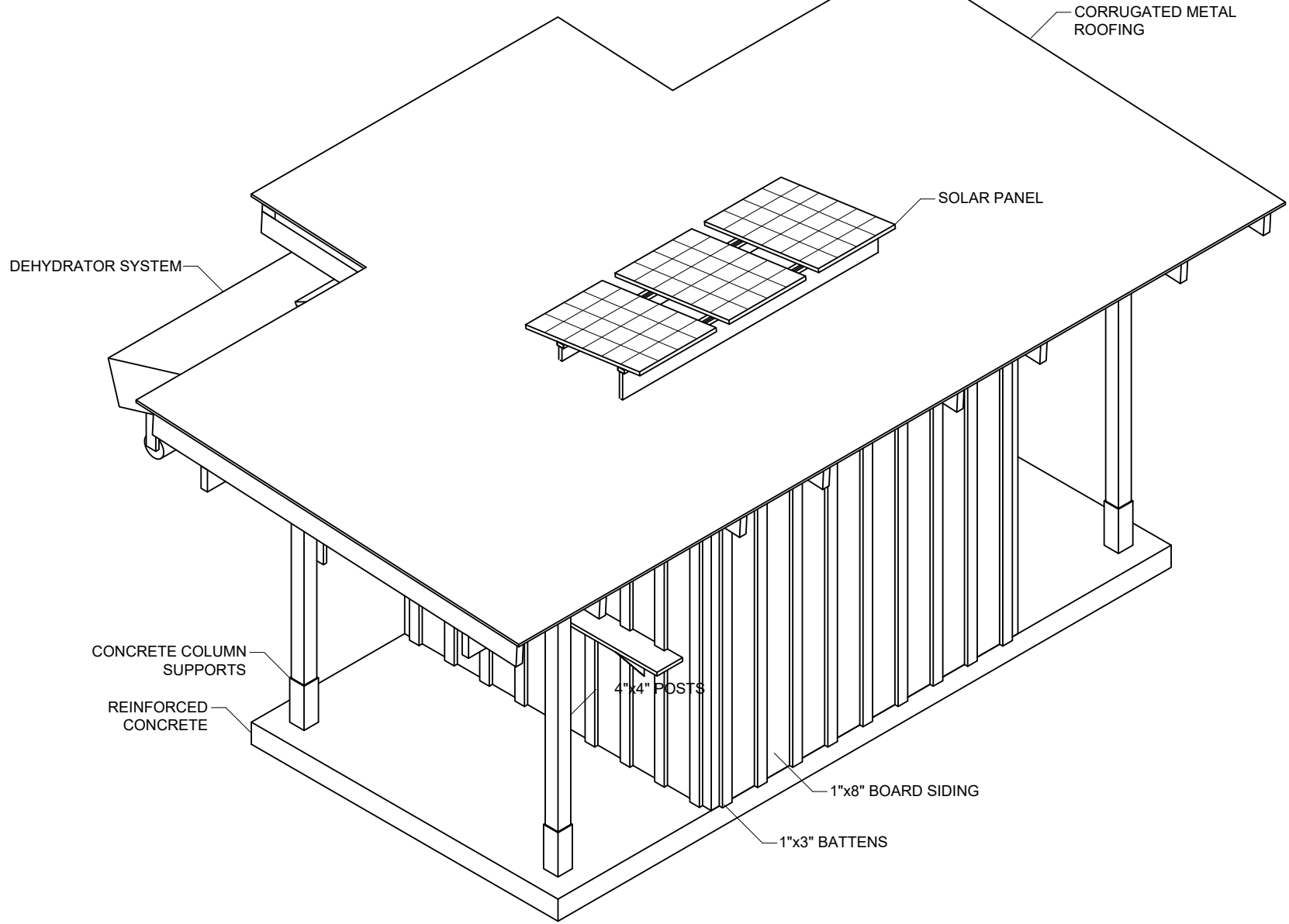
WEST ELEVATION  
SCALE: 1/4"=6"



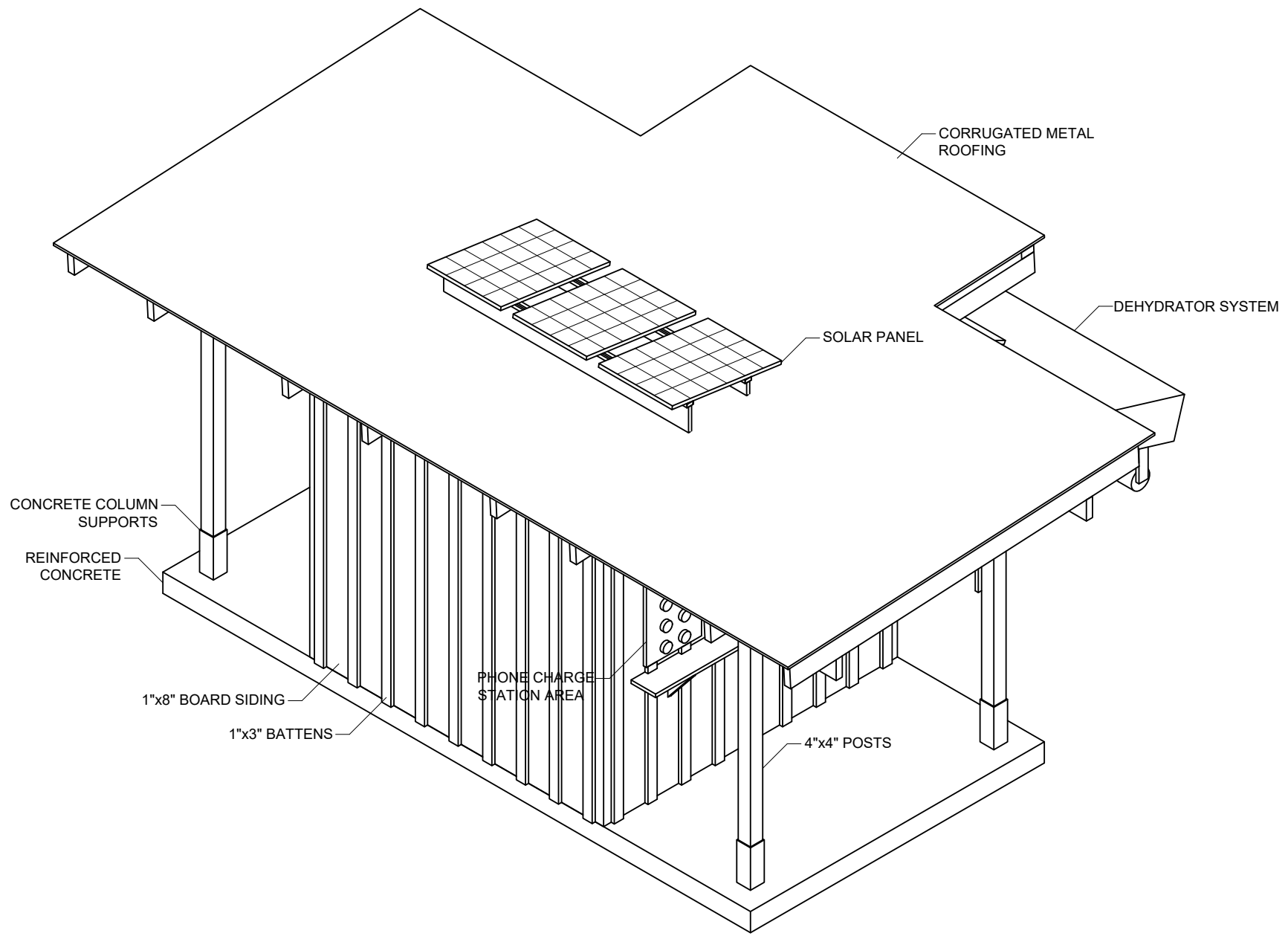
N-E ISOMETRIC  
SCALE: 3/4"=1'-0"



N-W ISOMETRIC  
SCALE: 3/4"=1'-0"

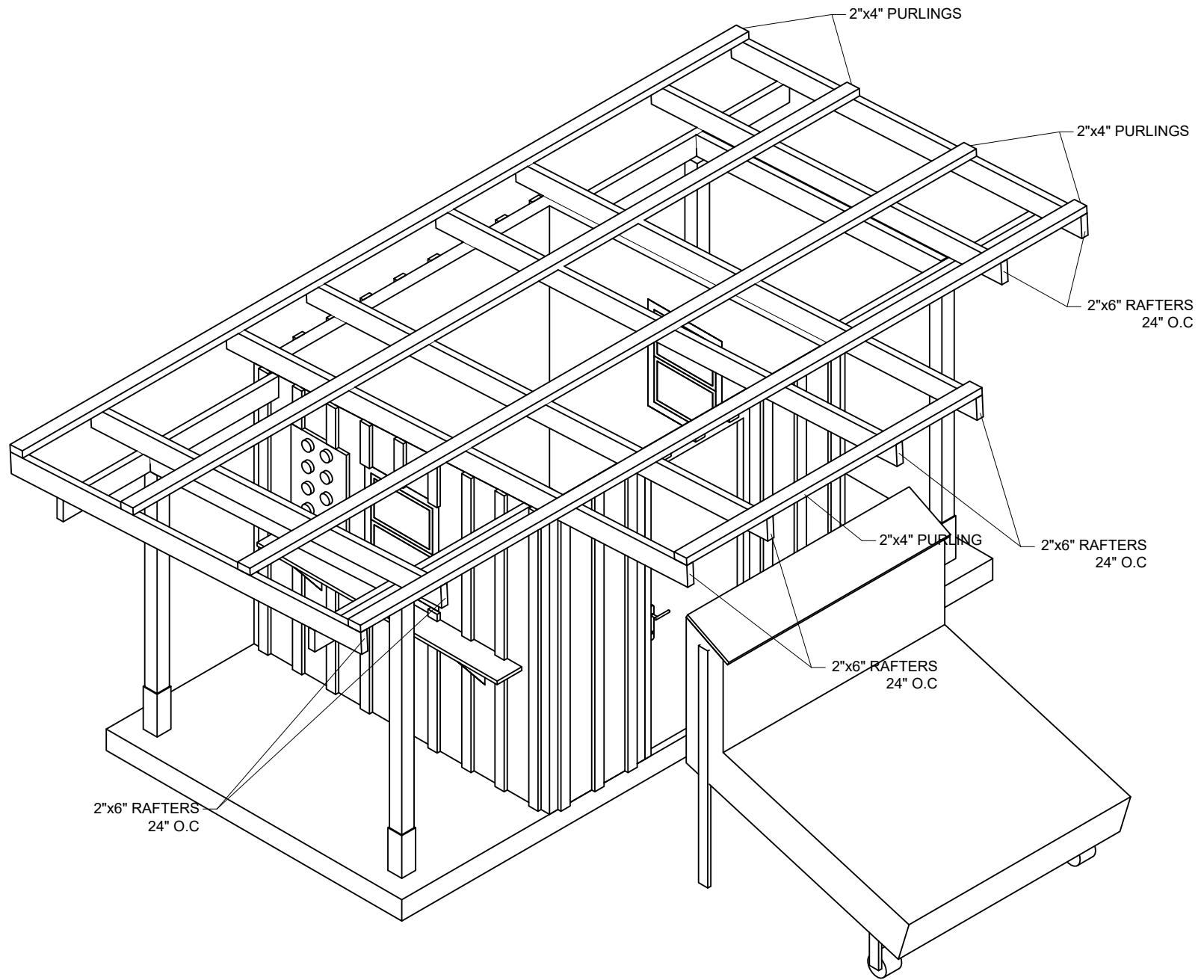


S-E ISOMETRIC  
SCALE: 3/4"=1'-0"

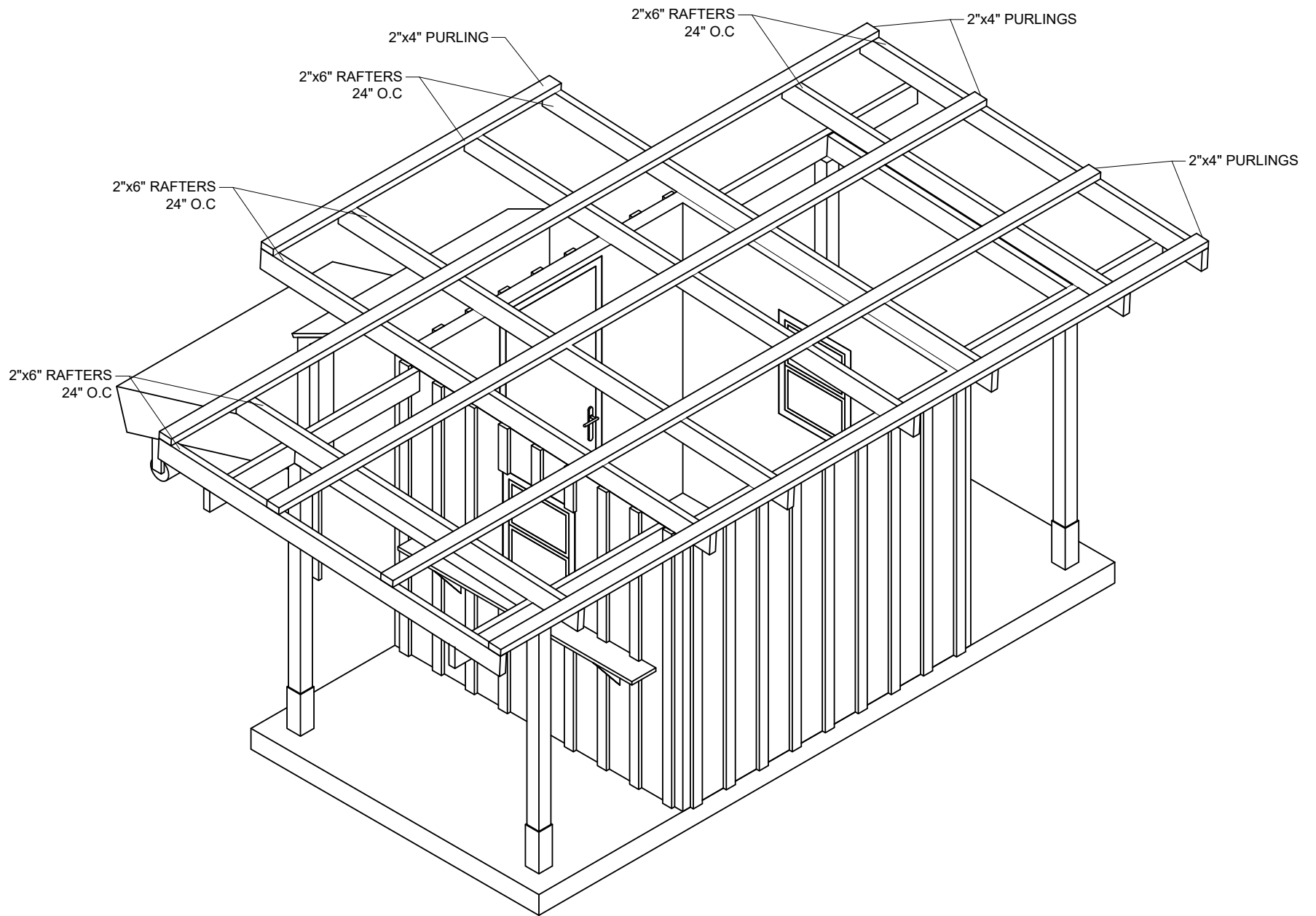


S-W ISOMETRIC  
SCALE: 3/4"=1'-0"





N-W ISOMETRIC RAFTERS DETAIL  
SCALE: 3/4"=1'-0"



S-E ISOMETRIC RAFTERS DETAIL  
SCALE: 3/4"=1'-0"